



FAIRPLEX

PRESENTS

K - 3rd Grade

Shifting

Aesthetics:

**A Selection of Works by 11
Contemporary L.A. Artists**

Shifting Aesthetics focuses on celebrating the talents and achievements of artists living and working in Los Angeles, using various mediums including ceramics, painting, mixed media, and photography. The exhibition highlights and speaks to the diversity in experiences, perspectives, and styles of each artist's body of work, as they forge their own unique artistic path within the L.A. landscape.

Self-Portrait

If you were an artist, what kind of art would you make?

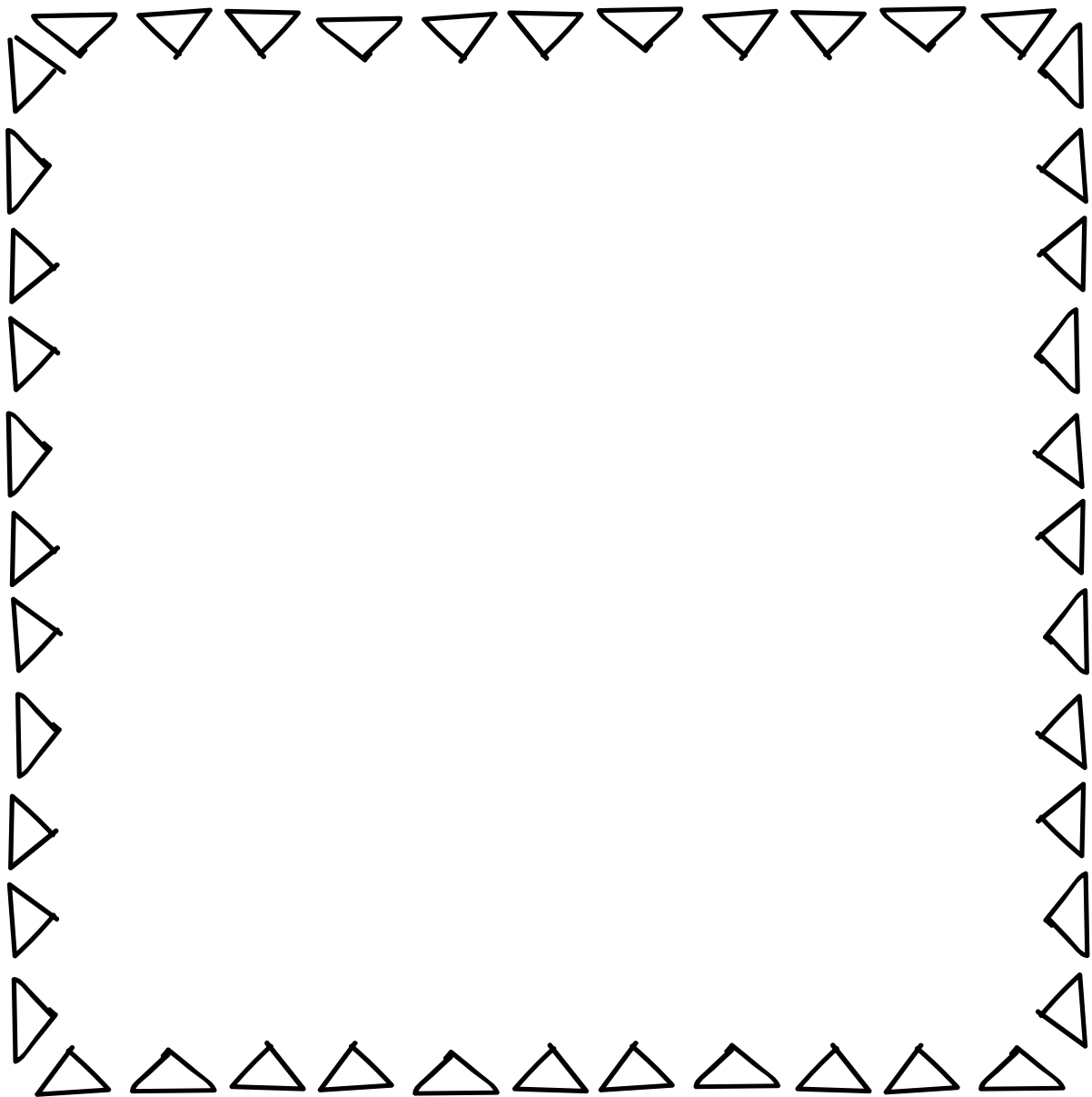
Fill in the blanks and then draw yourself in the frame below!

A self-portrait is when an artist draws, paints, or takes a picture of themselves.

My name is _____.

I am _____ years old and my favorite colors are

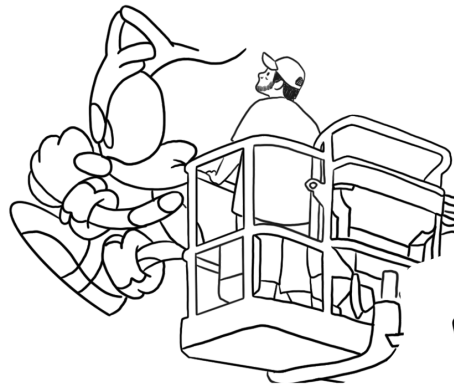
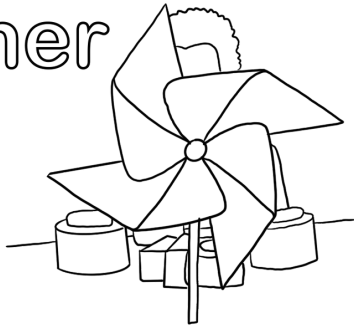
_____ and _____.



Meet the Artists

Artists can do so many things! Learn more about the artists in the exhibition & then color them in!

Christopher
makes
VIDEOS



David
paints
on
WALLS

Shizu
paints her
FRIENDS



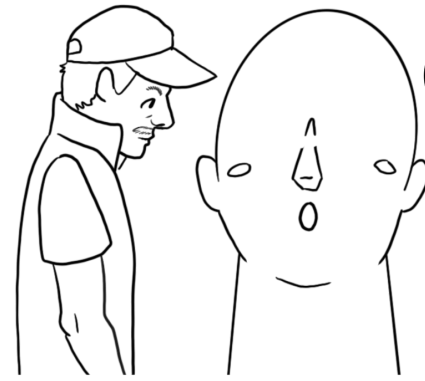
Star uses
FAMILY
PHOTOS

Patrick
makes
NEON
LIGHTS



Genevieve
takes
SELFIES

Adee
collages
PHOTOS
& PAINT



Charles
uses
CLAY

Darrel
creates
spaces
with
TAPE



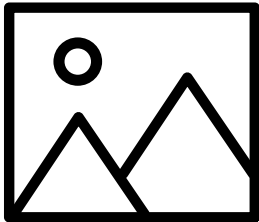
Benicia
photographs
in BLACK
& WHITE



noé is a
PERFORMANCE
artist

Matching

Match the picture with the word!



Paint Brush

Artist

Paint

Palette

Pencil

Painting

Artist

Paint Brush

Pencil

Pencil

Painting

Paint

Painting

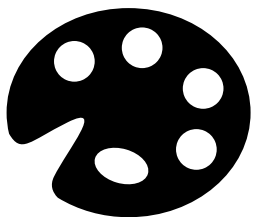
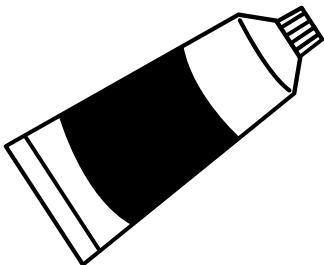
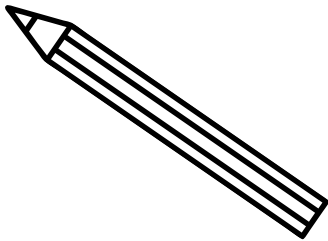
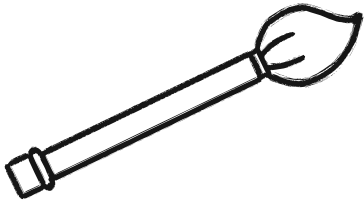
Paint

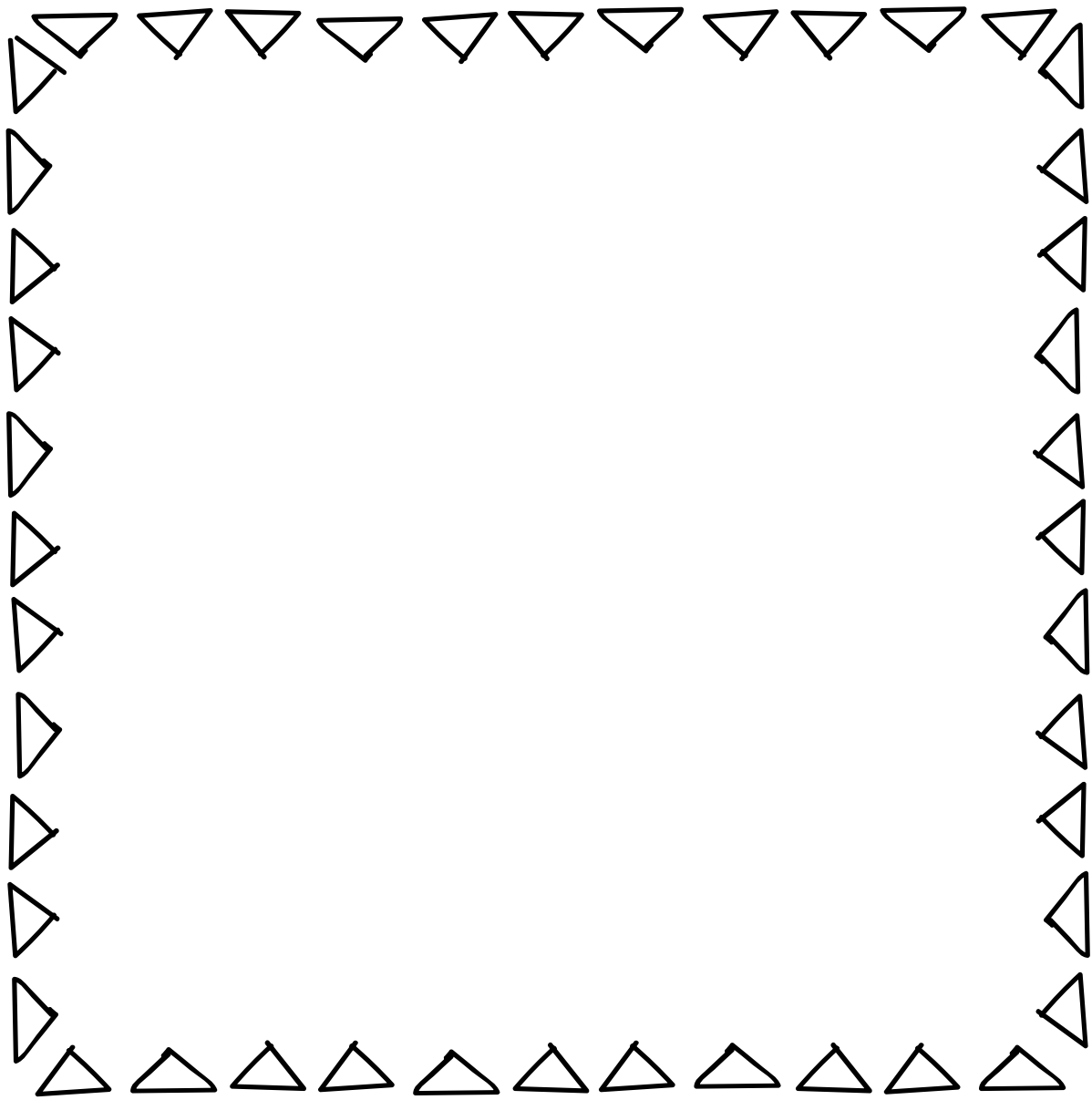
Palette

Paint Brush

Artist

Palette





What's Your Favorite?

Draw your favorite art piece in the gallery in the space above. Then write all about it below!

My favorite artwork is _____.

The artwork was created by _____.

It is my favorite because _____.

_____.

Home Art Activity

Make your own Pinwheel!

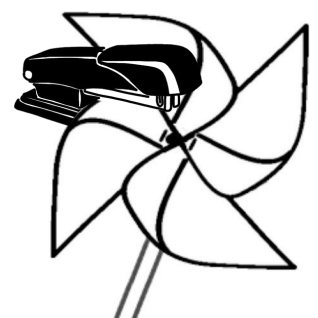
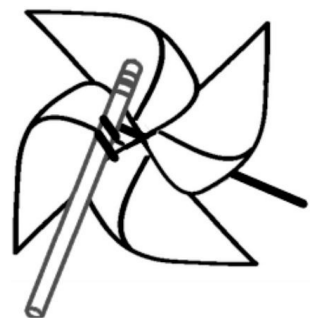
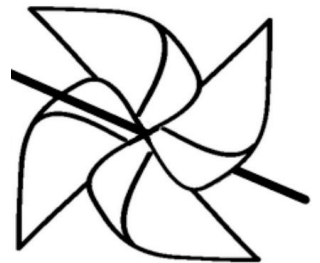
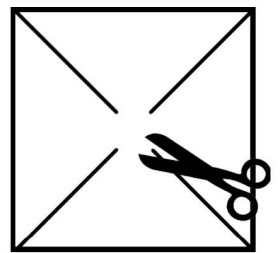
Christopher Richmond, an artist in the exhibition, has a pinwheel spinning in his video. Ask your parent to help you make your own pinwheel!

Materials Needed:

- Paper
- Scissors
- Pipe Cleaner
- Pencil
- Stapler

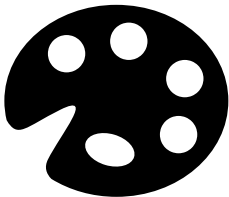
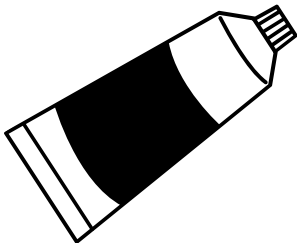
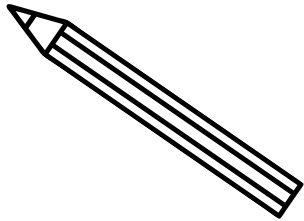
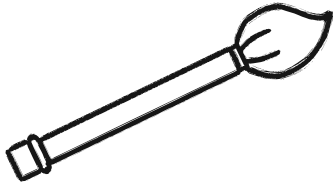
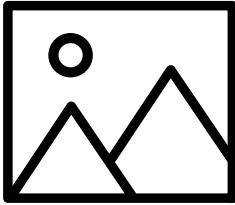
For more fun, you can color or put stickers on the paper before assembling your pinwheel.

1. Get a piece of paper and cut it into a square.
2. Cut each corner up to about an inch from the center.
3. Poke the pipe cleaner through the center of the paper, folding the corners into the middle (don't crease the paper).
4. Twist the pipe cleaner around the end of the pencil and tie a knot- this will keep the pin wheel on the pipe cleaner. Remove the pencil.
5. Staple the corners all together.
6. Twist the pipe cleaner around the pencil for the back.



Answer Key

Matching Activity



Paint Brush

Artist

Paint

Palette

Pencil

Painting

Artist

Paint Brush

Pencil

Pencil

Painting

Paint

Painting

Paint

Palette

Paint Brush

Artist

Palette



Brochure designed and
illustrated by Bryn Riihimaki

Learn more about Bryn's
work [here](#)

