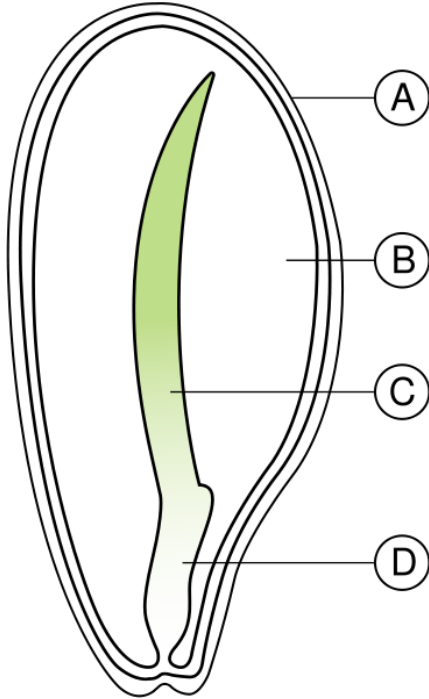


Name:

Date:

Period:

Seed Quiz

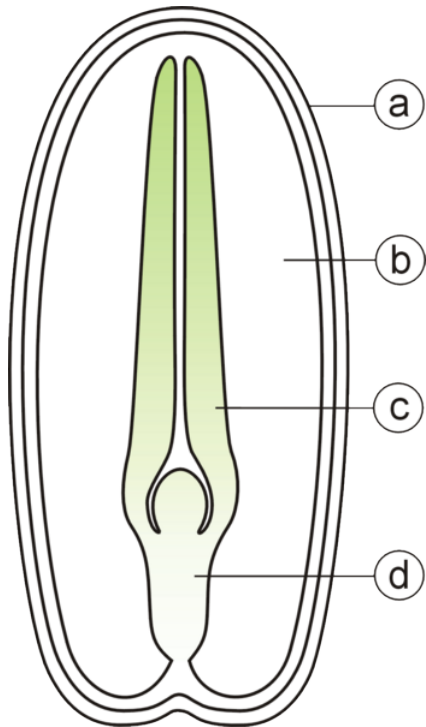


A

B

C

D



a

b

c

d

Name:

Date:

Period:

Monocot or Dicot

Directions: Determine if each description is a monocot or dicot. Indicate your answer by writing a 'M' for monocot or a 'D' for dicot. 1 Point Each.

1. Fibrous Roots _____
2. Flower parts are in 3's or multiples of 3 _____
3. Flower parts in four or five multiples _____
4. Leaves are net veined _____
5. Leaves have parallel veins _____
6. One seed leaf (cotyledon) _____
7. Tap Root System _____
8. Two seed leaves (cotyledons) _____
9. Vascular bundles are scattered in the stem _____
10. Vascular bundles in stems are arranged in a circle _____



"What do you have to plant to grow a seedless watermelon?"